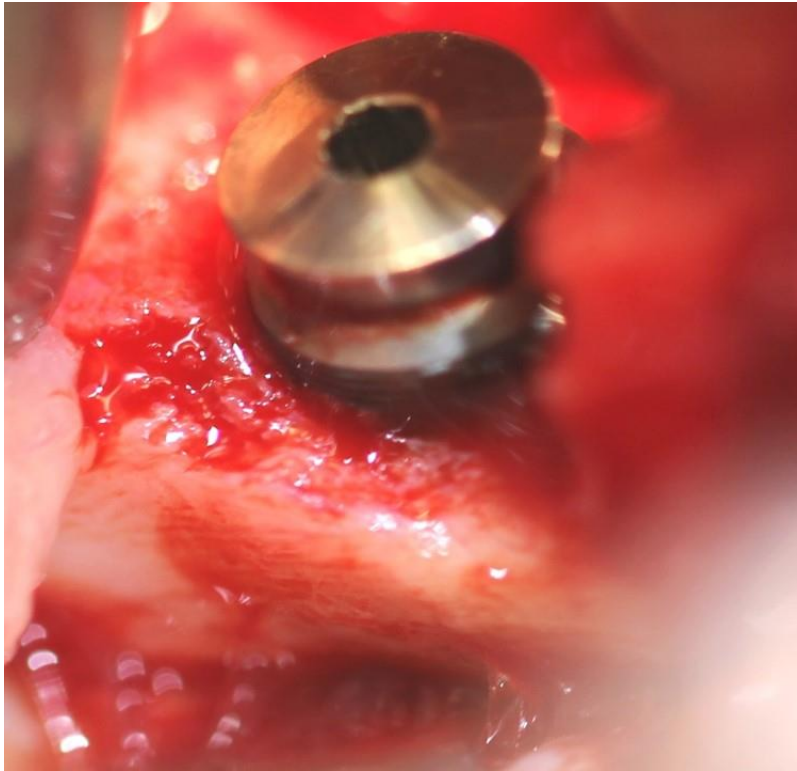
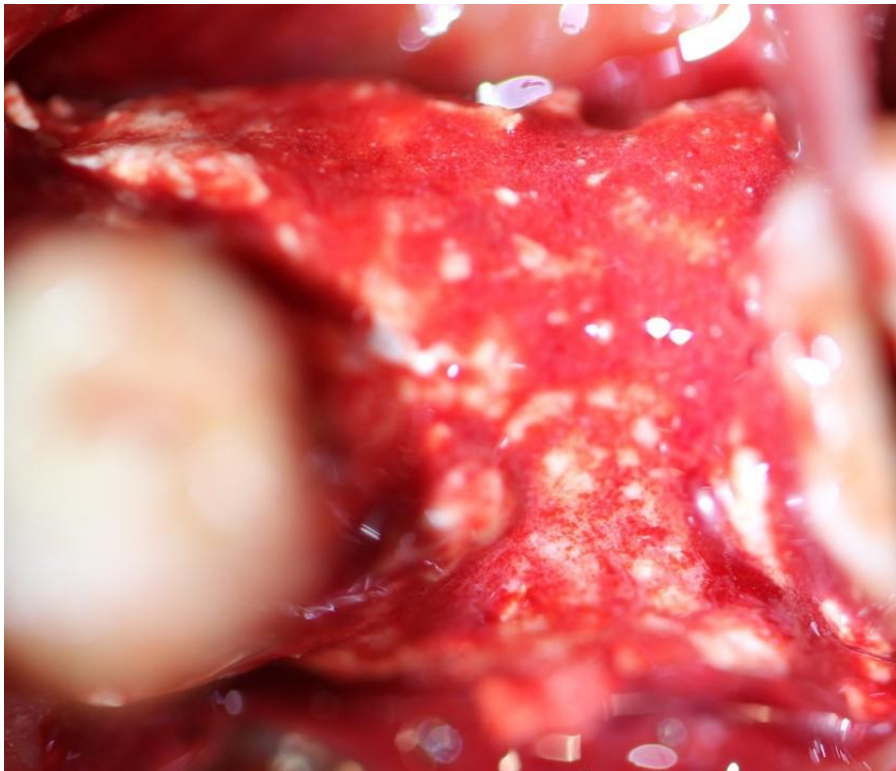


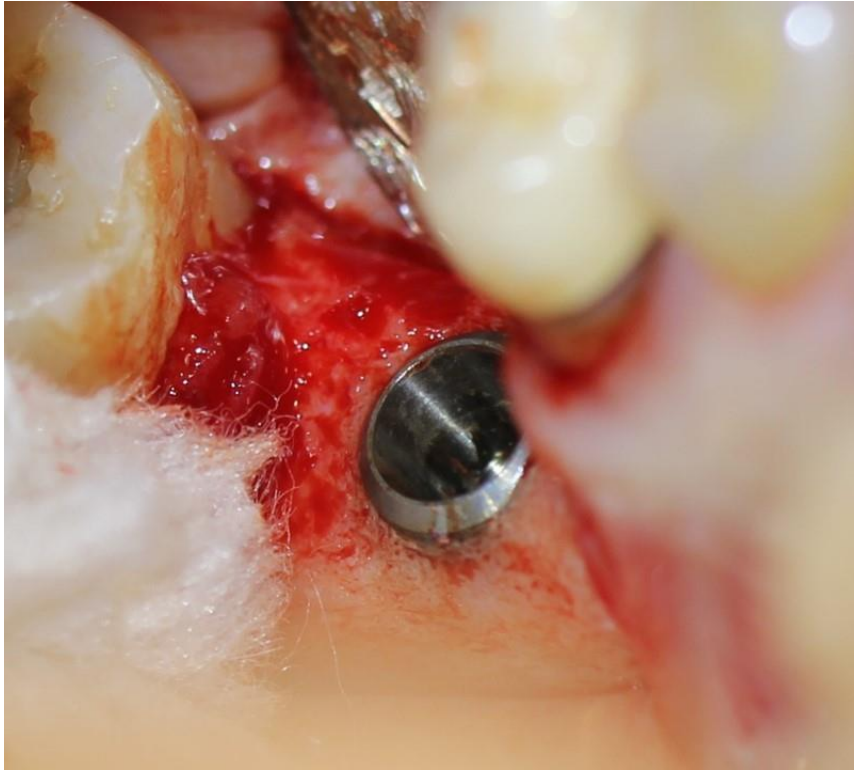
## Immediate Graft™ & Exposed Threads



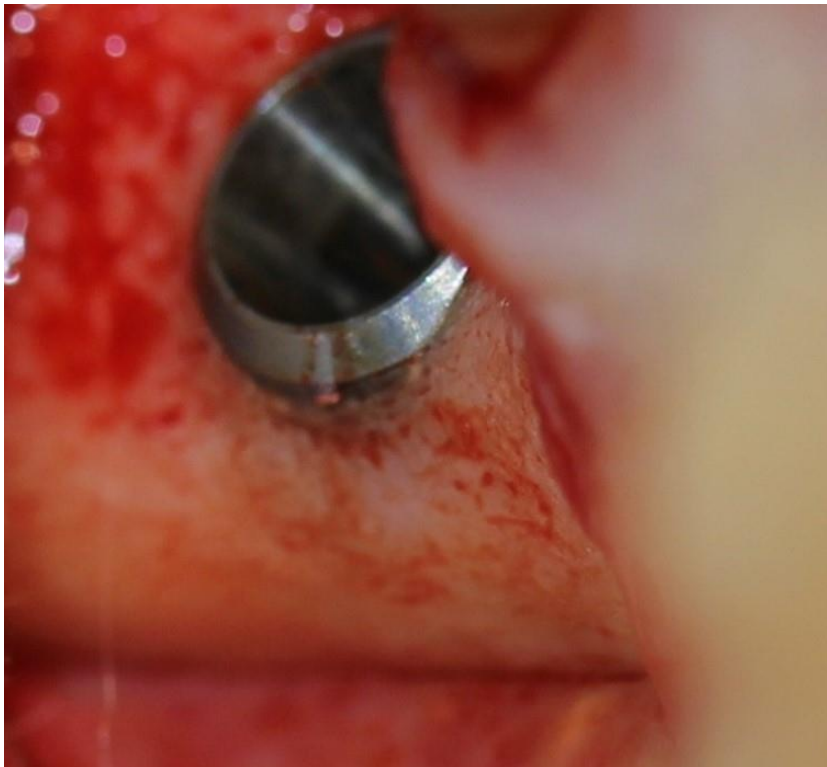
Irregular alveolar crest anatomy can commonly leave exposed threads. Whenever there is a need to regenerate bone around threads, we advise the implant be buried with primary closure.



The exposed threads are covered with immediate Graft. Since the amount of exposed threads was minimal, no membrane was used. However, there is a significant exposure of the coronal portion of the implant, so a nonresorbable membrane or a synthetic Guidor resorbable membrane is advised.



Three months after grafting at the healing abutment appointment.



Magnification of the regenerated crest.