

Socket Graft™

Injectable

Osteogenic Bone Graft

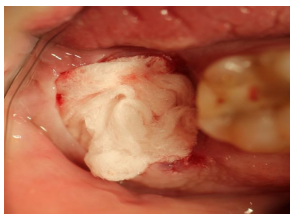
Keep Frozen-Thaws in 4 minutes

Socket Graft™ must be kept in the freezer. Graft material needs 4 minutes to thaw. **Once it is thawed, it can be left out for a few hours if the syringe has not been opened. Air will cause graft material to set.** Socket Graft™ can be re-frozen if the package has not been opened.

DIRECTIONS

- 1.If significant bleeding is present, dry the socket with a sterile gauze wetted with 1:50 lidocaine. This will help control blood flow for ease of application of the bone graft. **Blood does not need to be present, the osteoblasts that live in the bone are being targeted.**
- 2.Make sure to debride the socket. Any material left in socket can compromise the graft material.
3. Ensure syringe tip is snugly secured onto the syringe. The tip is not meant to be screwed in completely and may break if improper force is applied.
- 4.**Fill the socket with Socket Graft™ beginning at the apex and filling towards the gingival margin.**
- 5.**Using a flat instrument, push the graft material down to completely fill the root structure of the socket. Socket Graft Injectable is not meant to be packed**
- 6.Cover with a Teflon Membrane.
- 7.After suturing the membrane, Oral Bond™ can be placed over the membrane and the sutures, creating a hermetic seal preventing oral fluids and bacteria from entering the grafted site.

To avoid bone graft failure, do not use animal or human membranes to cover Socket Graft™.



Note*If heavy bleeding occurs before grafting, place a sterile gauze into socket, (wetting the gauze with lidocaine 1:50 helps slow blood flow) wait for bleeding to slow then quickly fill the socket. **Blood does not need to be present, the osteoblasts that live in bone are being targeted.**

Systemic antibiotics are advised if infection is present.

To avoid washing out of graft material instruct patient to avoid the grafted area for 2 weeks. Avoid sucking motion such as using straws. Avoid hot and hard foods. No vigorous mouth rinses or spitting. Please advise the patient that smoking can compromise the performance of the graft material.

If the gray dot on the product box turns black, the efficacy of the graft material may have been compromised. Please discard and notify us immediately.

Socket Graft™ is a dual phase calcium phosphate based synthetic bone graft material. Socket Graft™ is designed to quickly and safely treat the extraction socket to retain alveolar bone, stimulate bone formation and reduce post-operative complications. Socket Graft™ is designed to be quickly and completely resorbed. The insurance code for socket regeneration (preservation) is D7953. Socket Graft™ must be stored in a frozen environment.

INDICATIONS: Socket Graft™ is a bone grafting material intended for use in dental extraction sockets that have all walls remaining. The earliest dental implant placement is advised 8 weeks after grafting.

CONTRAINDICATIONS: Socket Graft™ is contraindicated in individuals who are unable to follow post op instructions.

PRECAUTIONS: Socket Graft™ is indicated for use in extraction sockets that have all walls remaining. In cases where a significant portion of the bony socket wall is missing, ridge augmentation surgery may be required. Do not overfill defects. Do not leave defect open. Do not compromise blood supply to the defect area. Socket Graft™ has not been studied in pediatric patients. Socket Graft™ is not intended for immediate load-bearing.

WARNINGS: Socket Graft™ is single use only. Do not re-sterilize or reuse. Do not use Socket Graft™ if the package has been opened or damaged or has exceeded the expiration date. Do not use if the temperature indicator on the packaging has turned black, indicating possible damage to the regenerative potential of Socket Graft™ **It is not advised to mix Socket Graft™ with anything other than Steiner Biotechnology graft materials.**

Federal law restricts this device to sale by or on the order of a dentist.

CONTACT INFORMATION:

STEINERBIO®

1051 Olsen St., Bldg. #3611

Henderson, NV 89011

Ph 866.317.1348

email: contactus@steinerbio.com

www.steinerbio.com