

Socket Graft™

Osteogenic Bone Graft

*Keep in Freezer until ready to use
DO NOT ALLOW TO THAW

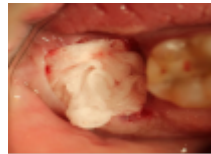
DIRECTIONS

Socket Graft™ must be kept in the freezer and used immediately when ready to graft a socket. Do not allow the graft material to thaw. The first petal is placed frozen and will thaw when placing and packing into the socket. As the sequential petals are placed, they will begin to thaw but maintain its malleable form until the socket is completely packed. Socket Graft™ can be re-frozen if the sterile package has not been opened.

If material appears dry: Drying has no negative effect on the performance of the material but makes it difficult to apply. Add moisture by applying a few drops of local anesthesia to the petals of graft for a manageable putty. We do not advise adding any chemical to the socket during socket grafting but adding local anesthetic to the graft will have no negative effect on performance or bone growth. Local anesthesia perfuses the tissues of the socket and could possibly result in more effective post-operative anesthesia.



If significant bleeding is present, dry the socket with a sterile gauze wetted with 1:50 lidocaine. This will help control blood flow for ease of application of the bone graft. **Blood does not need to be present. The osteoblasts that live in bone are what is being targeted by the graft.**



1. Make sure to debride the socket. Any material left in the socket can compromise bone growth.
2. Before cutting the clear package containing the graft material, bend the carrier while it is in the package to loosen the petals and to avoid the petals from falling out.
3. Cut open the package and remove the bone graft carrier. Do not allow the bone graft material to thaw or leave the package open for long periods of time. Use immediately after opening the package not allowing air to dry the bone graft material.
4. Using sterile cotton pliers, remove the first frozen petal and place into the socket. Allow a few seconds after placement then begin applying pressure. The petal will begin to thaw with body temperature and will pack into the socket. The first petal may need a few seconds to thaw in the socket before it will pack. Applying pressure too soon will cause the petal to breakup rather than pack. When approaching the crest with the final petals and to facilitate placement, lay the final petals on their side or cut in half. If the graft material becomes soft with blood, lay gauze over the graft material and pack firmly to absorb the fluid and condense the graft material simultaneously.
5. Cover with a Teflon Membrane. After suturing the membrane, Oral Bond™ can be placed over the membrane and the sutures, creating a hermetic seal preventing oral fluids and bacteria from entering the grafted site. Remove the sutures in 2 weeks and remove the membrane in one month. **To avoid bone graft failure, do not use animal or human membranes.**

Recommended use of systemic antibiotics to avoid graft failure

To avoid washing out of graft material instruct patient to avoid the grafted area for 2 weeks. Avoid sucking motion such as using straws. Avoid hot and hard foods. No vigorous mouth rinses or spitting. Do not clean teeth next to grafted site. Advise patient that smoking can compromise the regenerative process.

Socket Graft™

Socket Graft™ is a dual phase calcium phosphate based synthetic bone graft material. Socket Graft™ is designed to quickly and safely treat the extraction socket to retain alveolar bone, stimulate bone formation and reduce post-operative complications. Socket Graft™ is designed to be quickly and completely resorbed. The insurance code for socket regeneration (preservation) is D7953. Socket Graft™ must be stored in a frozen environment.

INDICATIONS: Socket Graft™ is a bone grafting material intended for use in dental extraction sockets that have all walls remaining. The earliest dental implant placement is advised 8 weeks after grafting.

CONTRAINDICATIONS: Socket Graft™ is contraindicated in individuals who are unable to follow post op instructions.

PRECAUTIONS: Socket Graft™ is indicated for use in extraction sockets that have all walls remaining. In cases where a significant portion of the bony socket wall is missing, ridge augmentation surgery may be required. Do not overfill defects. Do not leave defect open. Do not compromise blood supply to the defect area. Socket Graft™ has not been studied in pediatric patients. Socket Graft™ is not intended for immediate load-bearing.

WARNINGS: Socket Graft™ is single use only. Do not re-sterilize or reuse. Do not use Socket Graft™ if the package has been opened or damaged or has exceeded the expiration date. If the temperature indicator (gray dot) on the product box turns black, the efficacy of the graft material may have been compromised. Please discard and notify us immediately.

It is not advised to mix Socket Graft with anything other than SteinerBio graft materials.

Federal law restricts this device to sale by or on the order of a dentist.

STEINERBIO

1051 Olsen St., Bldg. #3611

Henderson, NV 89011

866.317.1348

contactus@steinerbio.com

www.steinerbio.com